

# Humanitarian Data Exchange

*A project by the United Nations Office for the  
Coordination of Humanitarian Affairs*

---

# Goals

HDX aims to make humanitarian data **easy to find and use for analysis.**

---

# Project Elements

## Repository

HDX will include a dataset repository, based on open-source software, where partners can share their data spreadsheets and make it easy for others to find and use that data.

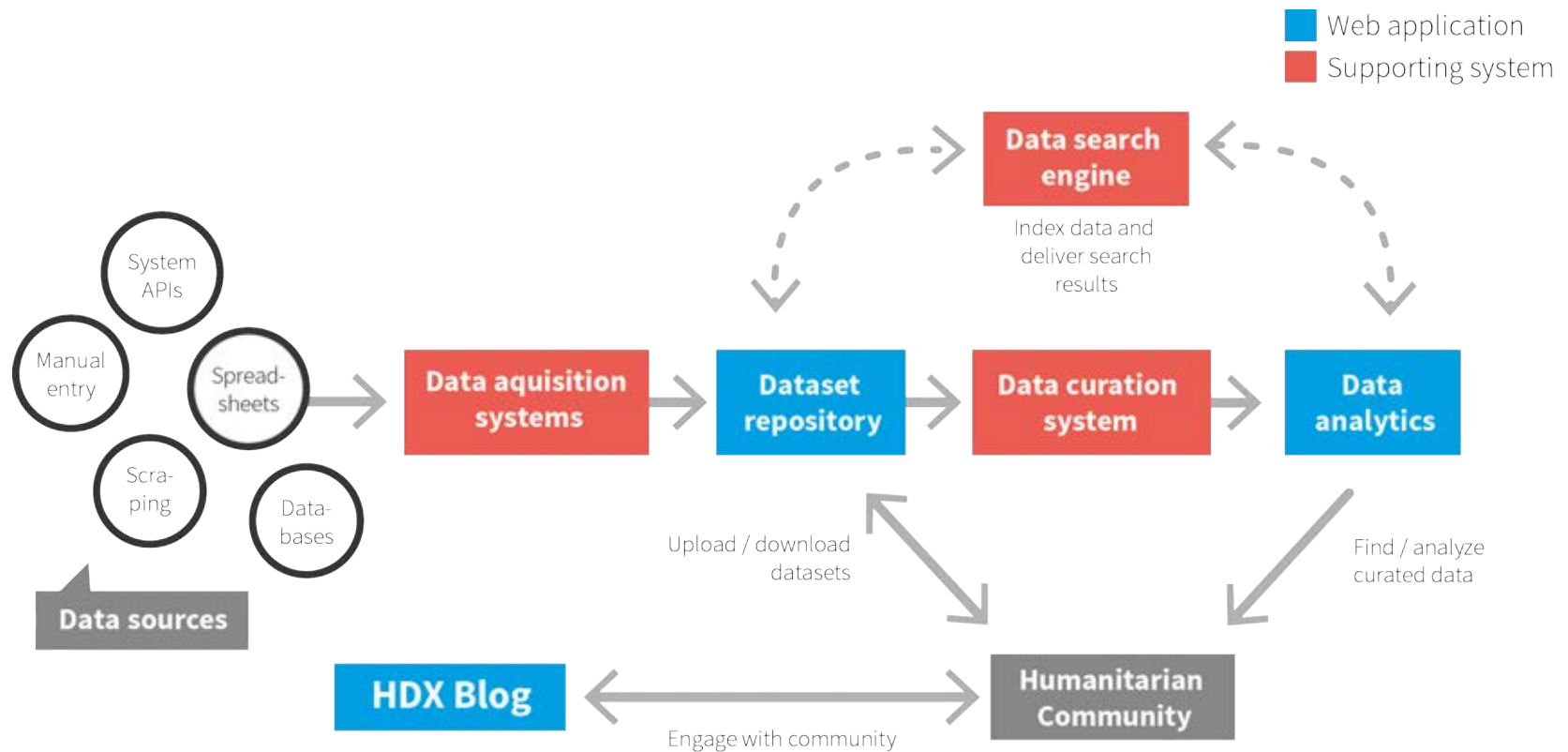
## Analytics

HDX brings together a Common Humanitarian Dataset that can be compared across countries and crises, with tools for analysis and visualization.

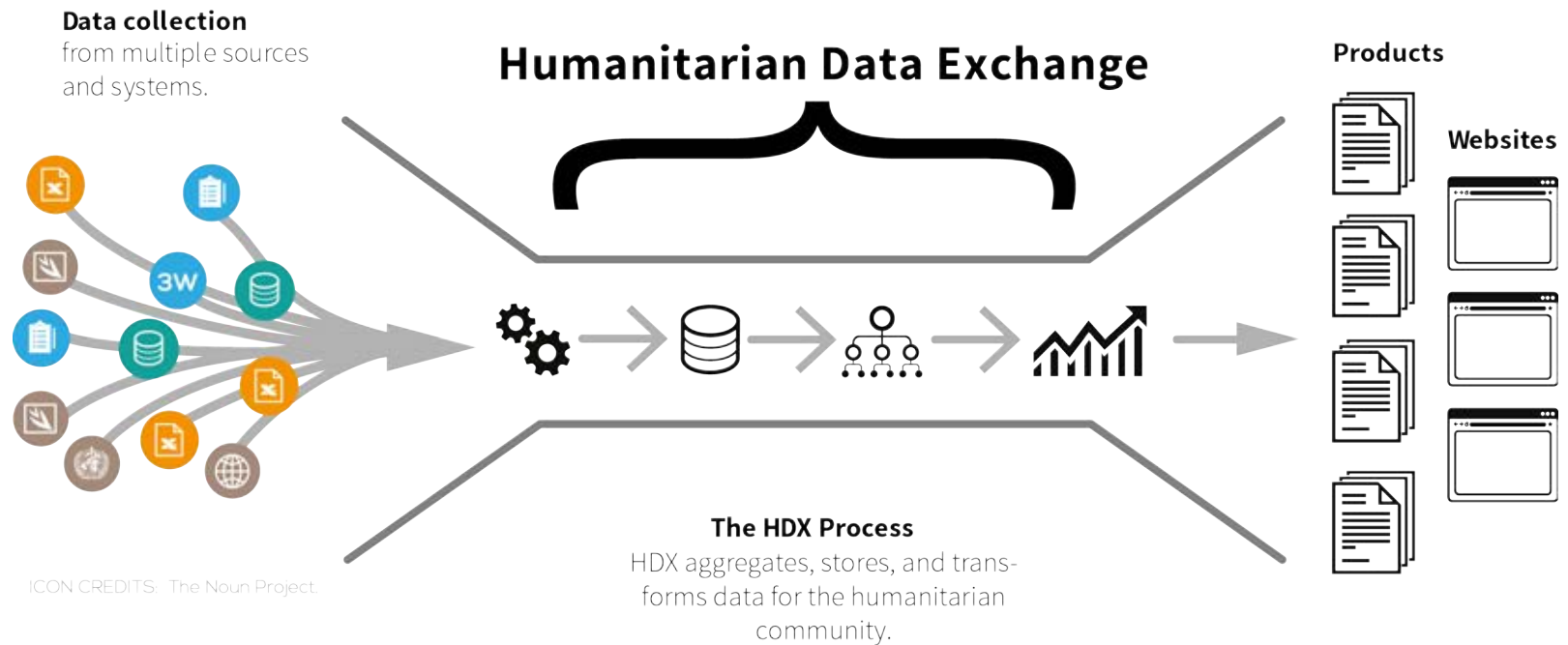
## Standards

HDX promotes community data standards (e.g. the Humanitarian Exchange Language) for sharing operational data across a network of actors.

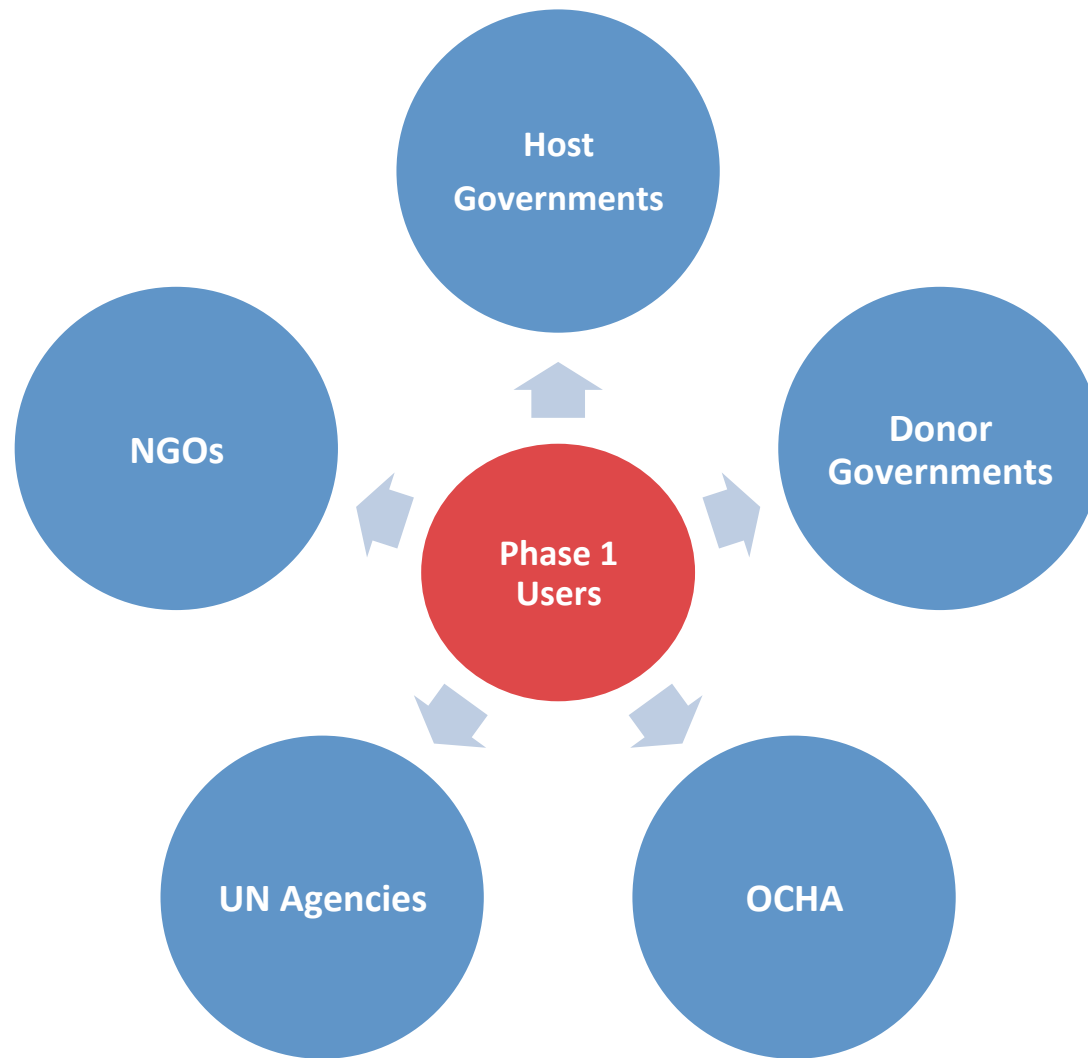
# Component Architecture



# System Diagram

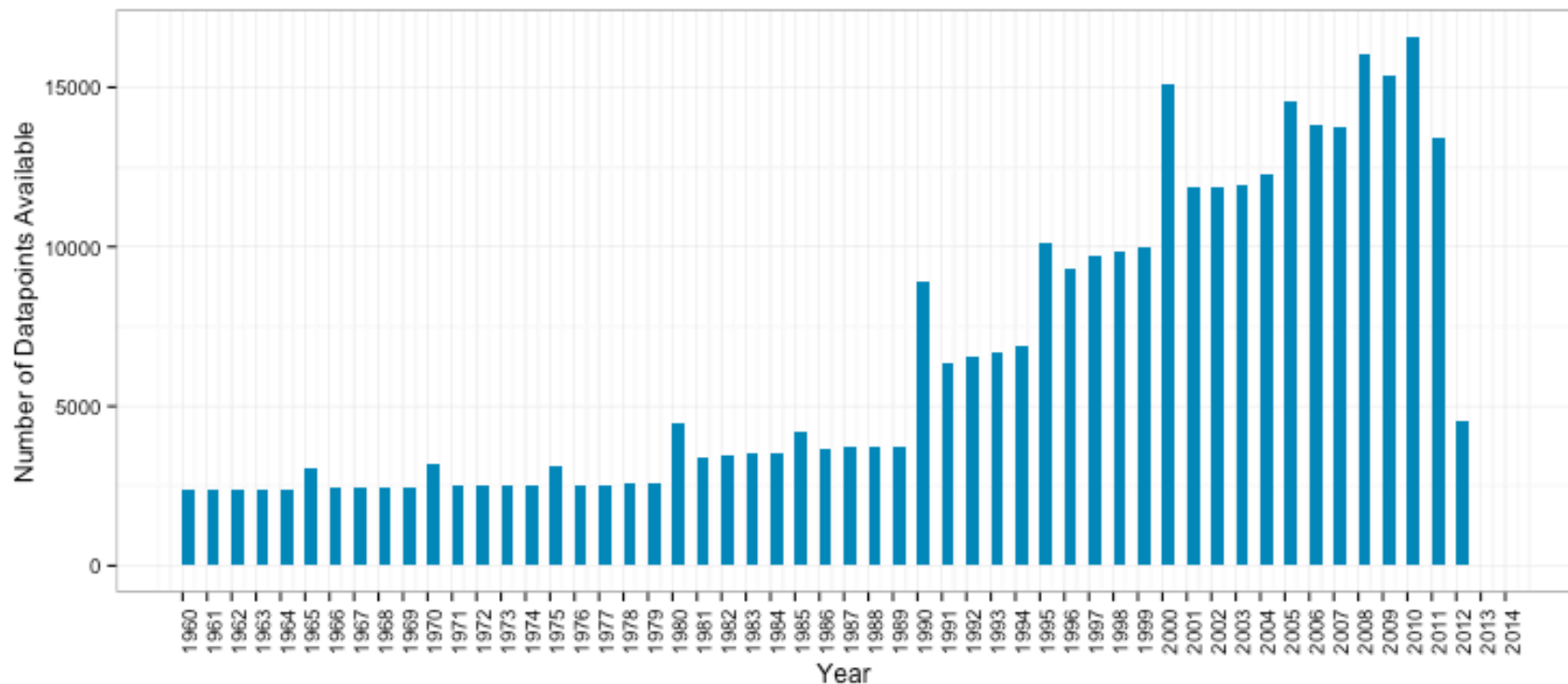


# Phase 1 Priority Users



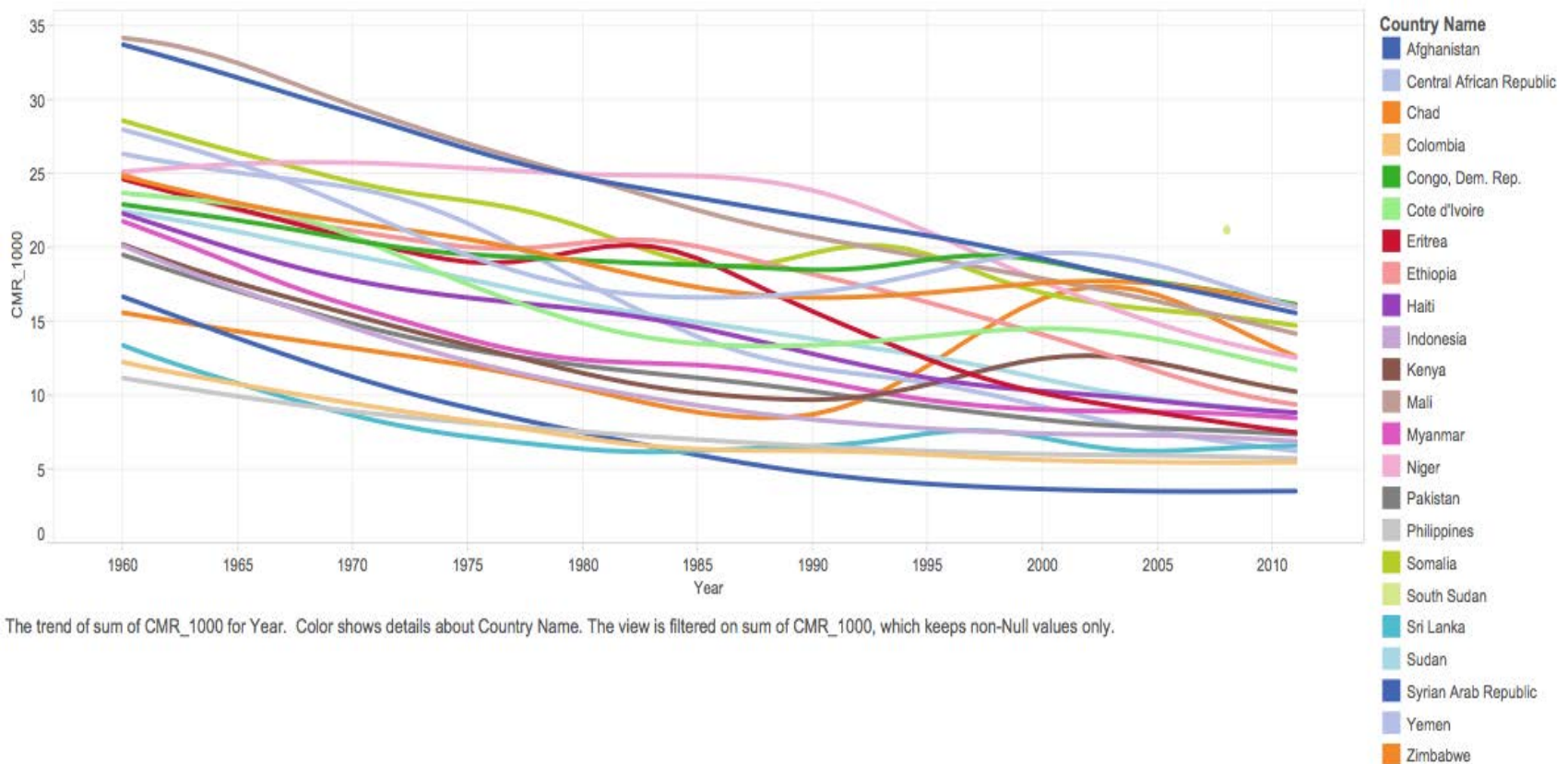
# Data Aggregation

300,000+ data points collected so far

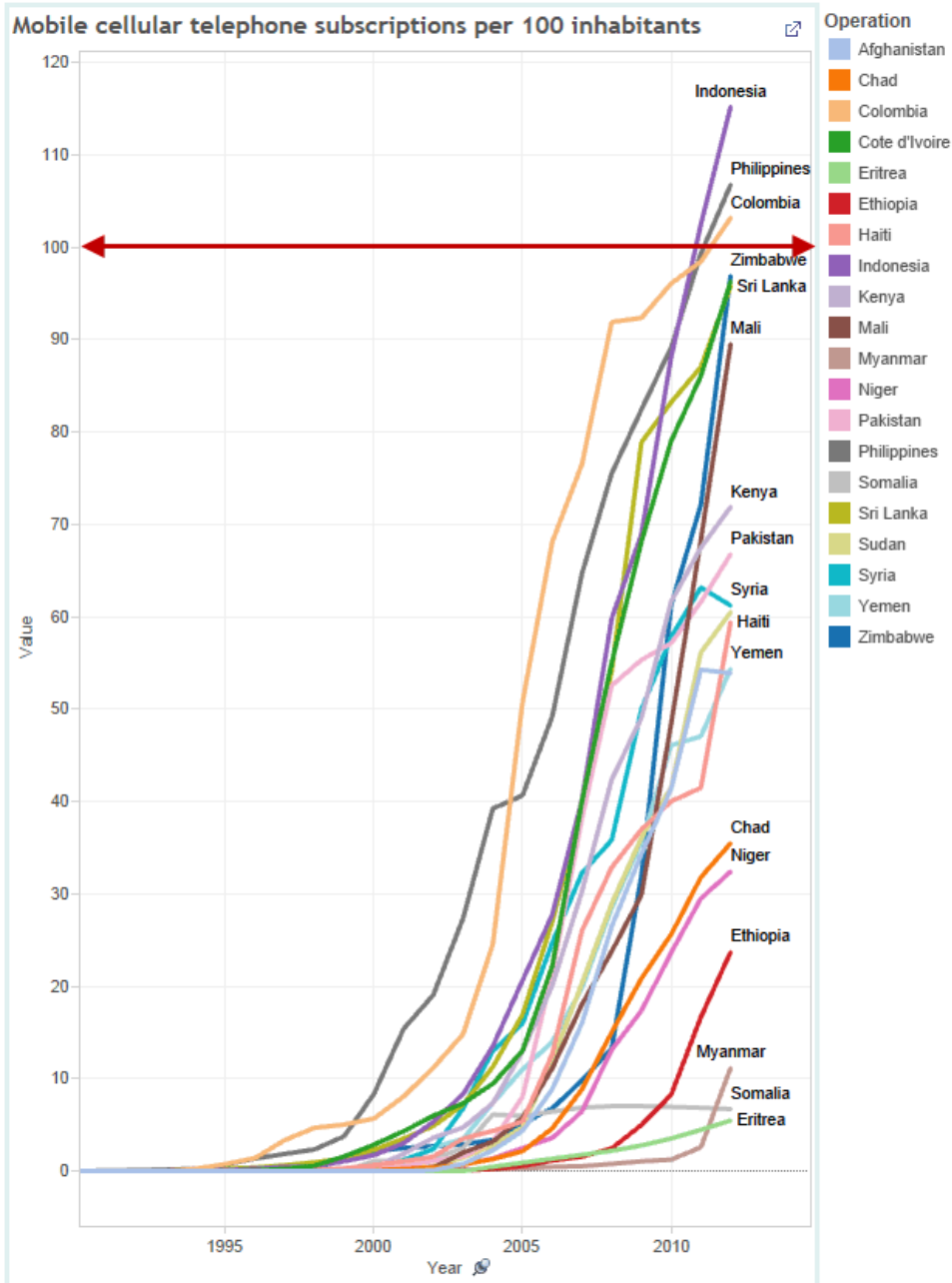


# Example:

## Crude Mortality Rate (past 50 years) 24 OCHA Country Offices

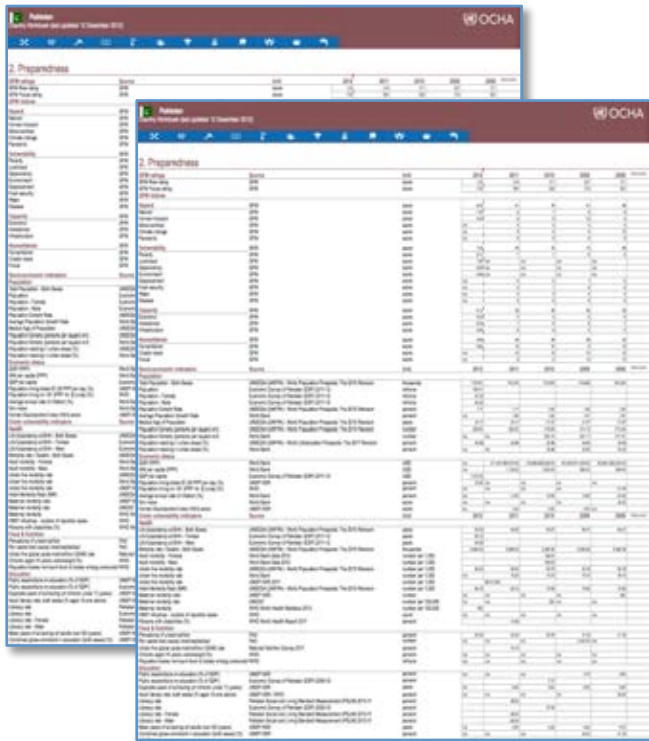






**Example:**  
 Mobile phone subscriptions per 100 people (past 17 years) -  
 24 OCHA Country Offices

# The Common Humanitarian Dataset



The image displays two overlapping screenshots of the OCHA Common Humanitarian Dataset interface. The top screenshot shows a summary view with various filters and a table of data. The bottom screenshot shows a more detailed view of the data table with multiple columns and rows.

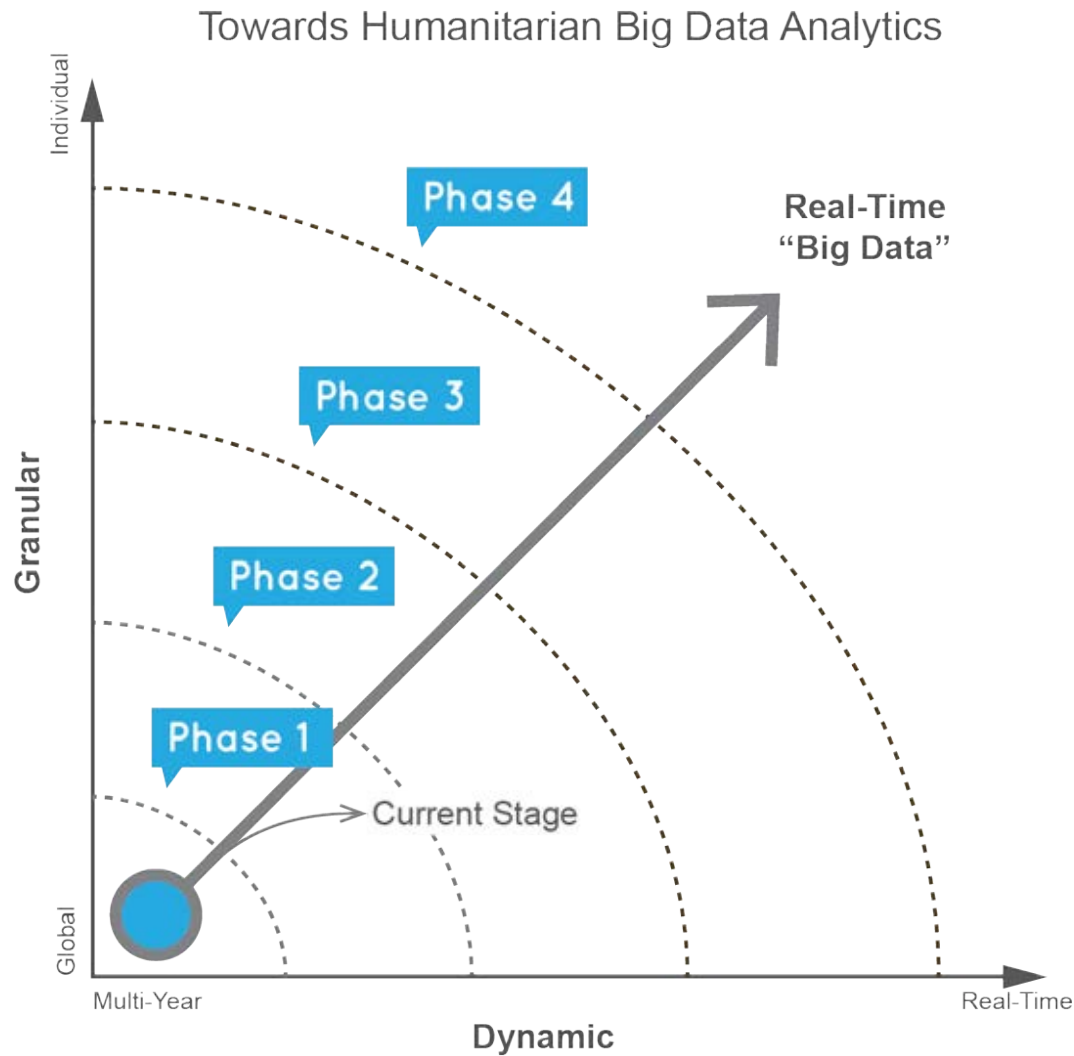
- 100+ indicators from multiple data sources
- Includes data from *across the programme cycle*:
- Country context (languages, currency, office locations, etc)
- Preparedness data
- Operational data
- Humanitarian financing
- Geospatial data

# Quality assurance framework

## Quality dimensions:

1. **Relevance** - the degree to which it meets the current and potential future needs of the clients
2. **Accuracy** - the degree to which the information correctly describes the phenomenon it was designed to measure.
3. **Timeliness** - the delay between when the data is collected and released for use.
4. **Accessibility and interpretability** - the ease with which data can be obtained from the data sources and the availability of the supplementary information (metadata) needed to utilize and understand the data effectively.
5. **Comparability** - the degree to which data can be brought together with other statistical data within an analytical framework.

# Real-time, granular data



# Project Scope and Timeline

JANUARY 2014 ~ DECEMBER 2014

JANUARY 2015 ~ DECEMBER 2015

**PHASE 1: A FUNCTIONAL PLATFORM**

**PHASE 2: SCALING TO ALL OCHA COUNTRY OFFICES**

**3 Countries**

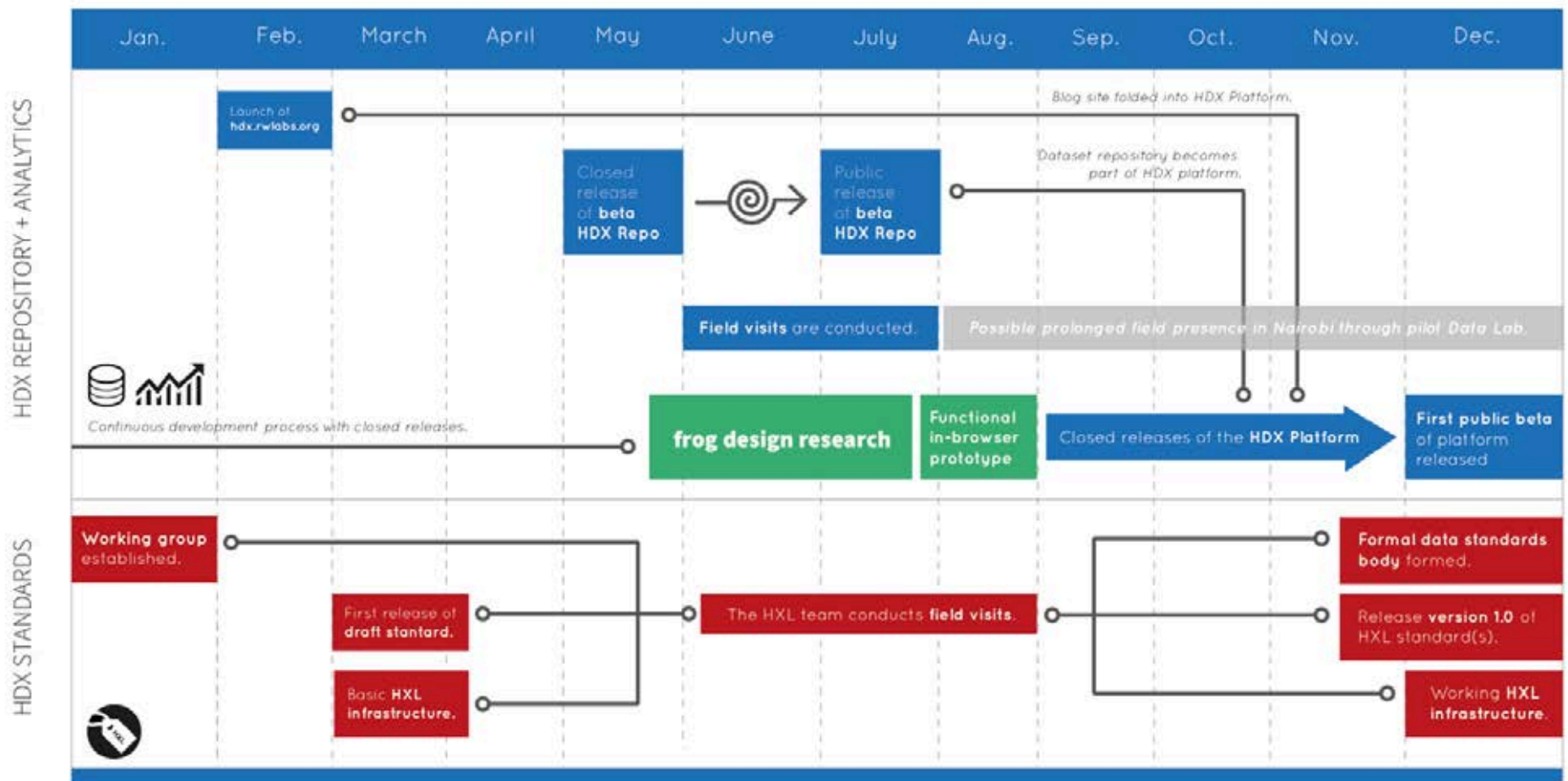
**20+ Countries**

**Phase 1** will develop a functional platform for 3 countries.

**Phase 2** will scale the system to more countries and more users.

*The timeframe will depend on resources and data readiness.*

# HDX HIGH-LEVEL ROADMAP





SUBMIT DATA 




yumie ▾

# The humanitarian data exchange

## WHERE YOUR DATA COMES TO LIFE

This is an early version of the HDX Repository. Initially, you will be able to find global datasets relevant to humanitarian work as well as local datasets from our three pilot locations - Colombia, Kenya and Yemen. You can also create an account and add your own data to the repository to share privately or publicly. Please have a look around and send us your feedback.


**FIND DATA**

Search HDX Repository 

eg. [baseline data](#) or [natural disasters](#)

Choose Country ▾

654 DATASETS   52 COUNTRIES   35 SOURCES

A PROJECT BY:  OCHA

RELATED SITES: 





STAY CONNECTED:



---

# Deliverables for the Field

1. A place to find the data spreadsheets that are shared amongst the humanitarian community
  2. An analytic interface for comparing country-based humanitarian data across time and space
  3. A data quality review process for a subset of humanitarian data
  4. Agreed data standards for a subset of humanitarian data
  5. Technical and data analysis support
-



---

## ■ Data Labs (concept)

A Data Lab is a physical space in a field office that is staffed by team of data managers, developers and data analysts dedicated to improving the data environment *with* OCHA and the wider community.

---

# Supporters



THE GOVERNMENT  
OF THE GRAND DUCHY OF LUXEMBOURG



# Stay in touch

[hdx.rwllabs.org](http://hdx.rwllabs.org)

Email us with questions at [hdx@un.org](mailto:hdx@un.org)

Follow us [@humdata](https://twitter.com/humdata) for tweets on  
#opendata and #HXL



OCHA