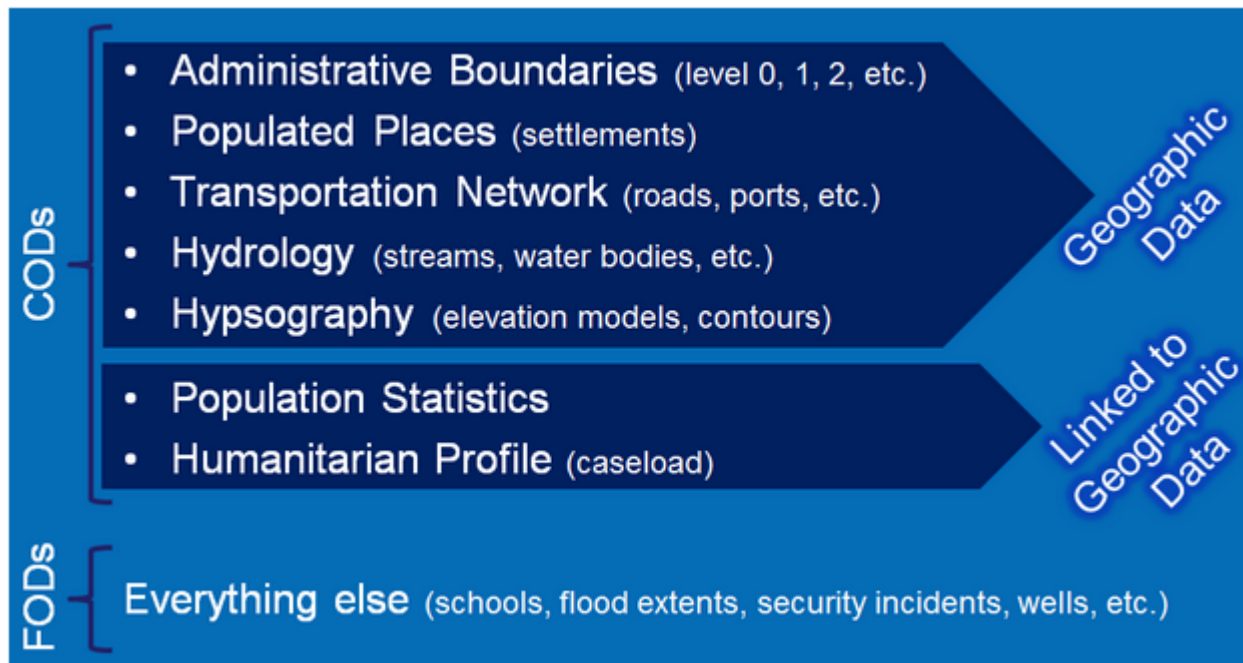

Common Operational Datasets & Fundamental Operational Datasets

<https://www.humanitarianresponse.info/applications/data>

Kristina MacKinnon (OCHA)
UNGIWG, New York, May 15, 2014

Common Operational Datasets (COD)



COD creation in a country office

IM Working Group



UN agencies
NGOs
Government
Universities
V&T community
Others...



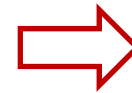
Humanitarian community in country



Members may be data sponsors
helping to identify data sources

Group agrees on COD dataset that
the humanitarian community in
country will use

Group cleans/processes/maintains the
COD dataset



Register COD online



3 ways CODs are registered

- Dataset directly uploaded
 - Link to data source
 - Contact information provided
-

COD creation in a regional office

Regional office works with governments with preparedness activities



Register COD online



Regional offices work with other data sources



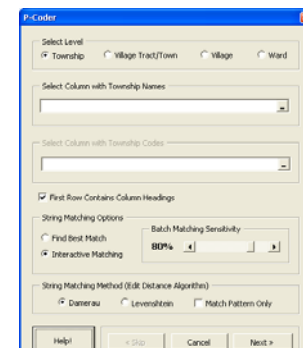
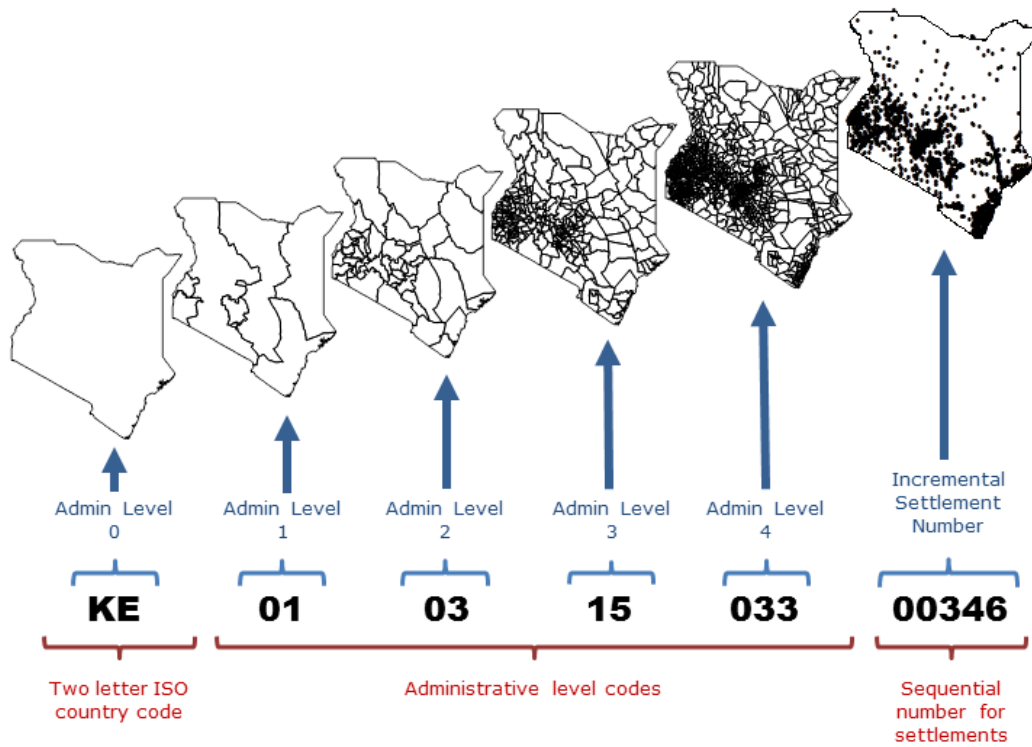
GIS workshops
Data preparedness workshops
Capacity building events
Bilateral meetings
Advocates for open data

3 ways CODs are registered

- Dataset directly uploaded
- Link to data source
- Contact information provided

UN Agencies
NGOs
Volunteer and Technical community
Online sources
etc

P-codes



Humanitarian Response PHILIPPINES

Home Calendar Contacts Coordination Hubs Assessments Registry Documents Maps and Visuals Search Visuals Figures Search

Locations

Table Map

Note: the p-codes displayed here include PH for use on this site, the government codes are numeric only see: [NCEB](#) for more details. You can also look at (this page) for more PCode data.

Name	PCode	Apply					
san antonio							
Admin1	PCode1	Admin2	PCode2	Admin3	PCode3	Admin4	PCode4
I (Ilocos Region)	PH010000000	ILOCOS NORTE	PH012800000	PIDGIG	PH012818000	San Antonio	PH012818019
I (Ilocos Region)	PH010000000	ILOCOS NORTE	PH012800000	SARRAT	PH012821000	San Antonio	PH012821003
I (Ilocos Region)	PH010000000	ILOCOS SUR	PH012900000	CITY OF CANDON	PH012906000	San Antonio (Pop.)	PH012906036
I (Ilocos Region)	PH010000000	ILOCOS SUR	PH012900000	NARVACAN	PH012914000	San Antonio	PH012914026
I (Ilocos Region)	PH010000000	ILOCOS SUR	PH012900000	SANTA CRUZ	PH012924000	San Antonio	PH012924038
I (Ilocos Region)	PH010000000	LA UNION	PH013300000	AGOO	PH013301000	San Antonio	PH013301014
I (Ilocos Region)	PH010000000	LA UNION	PH013300000	ARINGAY	PH013302000	San Antonio	PH013302012
I (Ilocos Region)	PH010000000	LA UNION	PH013300000	NAGULIAN	PH013311000	San Antonio	PH013311033
I (Ilocos Region)	PH010000000	PANGASINAN	PH015500000	CITY OF ALAMINOS	PH015503000	San Antonio (R. Magaysay)	PH015503041
I (Ilocos Region)	PH010000000	PANGASINAN	PH015500000	ROSALES	PH015531000	San Antonio	PH015531021

Fundamental Operational Datasets (FOD)

Datasets that are relevant to a humanitarian operation

More specific to a particular sector or otherwise do not fit into one of the seven COD themes.

Damage Assessments: earthquake damage, flood damage, flood extents. **Education:** education facilities, annual statistics, adult literacy rates. **Elections:** election dates, polling station locations, voter turnout. **Food Security:** cereal, millet, and sorghum prices in main markets, phases, security outlook, population affected by food insecurity, current food security, nutrition centers, food economy zones, **Nutrition:** hot spot, malnutrition situation, global acute malnutrition, acute malnutrition, nutrition hot spots, therapeutic and supplementary feeding. **Health:** hospitals, medical clinics, health facilities, cholera treatment centers and units, health boundaries, diarrhea levels for children under 5 years, health boundaries, immunization statistics, life expectancy at birth, mortality. **Affected Persons Locations:** internally displaced people and refugee locations, displacement tracking, flood relocation camp locations, displacement tracking matrix. **Logistics:** warehouse location. **Security:** police stations, suspected hazardous areas. **Other:** parks, forests, water points, land use, water sources and points, climate, fuel stations.

FOD creation

Information Management Working Group (HQ)



Register FOD online



Information Management Working Group (country)
&
Regional Offices





APPLICATIONS



Data



Indicators Registry



Kiosk



Tools

HumanitarianResponse.info is provided by UN OCHA to support humanitarian operations globally

Learn more about HumanitarianResponse.info

Read our Blog



Consolidated Appeal Process



- ✉ info@humanitarianresponse.info
- ✉ help@humanitarianresponse.info
- 📧 humanitarianresponse.info
- 📡 RSS feed
- ✓ Login to follow us

Filter: 72 items displayed

LIST

TABLE

Filter by locations:

Filter by dataset categories:

COD (18)

- Administrative Boundaries (5)
 - Admin Level 1 Boundaries (1)
 - Admin Level 2 Boundaries (1)
 - Admin Level 3 Boundaries (1)
 - Admin Level 4 Boundaries (1)

Humanitarian Profile (4)

Hydrology (1)

Water Courses (1)

Hypsography (1)

Contour Lines (1)

Populated Places (1)

Settlements (villages, towns, cities) (1)

Population Statistics (3)

Transportation Network (3)

Aerodromes (airports, airfields, HLZs, etc.) (1)

Roads (2)

**PHILIPPINES (THE): Humanitarian Profile****Summary**

DROMIC data by DSWD on municipalities within the 50km radius of the typhoon Haiyan/Yolanda track as of 27 January 2014

Dataset Date

27-01-2014

Dataset Language(s)

English

Dataset Files

Typhoon Yolanda DSWD DROMIC Consolidated 27Jan2014.xlsx

Dataset Types

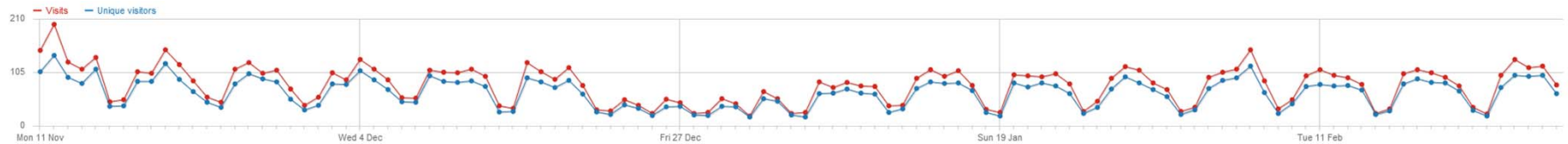
Table

Post date

30-01-2014

Instructions[View more](#)**PHILIPPINES (THE): Other****Summary**

COD FOD Registry Overview (11 Nov 2013 - 28 Feb 2014)



912 Datasets registered

74 Countries

8,268 Visits

299 Searches

4,378 Downloads

Top Country Datasets Downloaded

Philippines

Syria

Afghanistan

Where are CODs found

		Aff. Pop	CCCM	Early Recovery & Livelihood	Education	Em. Shelter	Em. Telecoms	Food Sec. and Agr.	Health	Nutrition	PR	
AKLAN	Altavas	23919	0	2	2	5	0	39	2	0		
	Balete	27197	0	2	0	2	0	10	0	0		
	Banga	38063	0	2	1	12	0	3	0	0		
	Batan	30312	0	2	1	9	0	41	3	6		
	Buruanga	16962	0	0	0	0	0	2	0	0		
	Ibajay	45279	0	0	0	0	0	3	0	0		
	Kalibo	74611	34	1	0	0	0	16	1	0		
	Lezo	14518	0	0	0	0	0	11	0	0		
	Libacao	28005	0	2	0	0	6	0	11	6		
	Madilag	18168	0	0	0	12	0	0	31	0		
	Makato	35461	0	0	1	0	0	0	24	0		
	Malay	45811	0	0	0	0	0	0	2	0		
	Malinao	24108	0	0	0	0	11	0	43	0		
	Nabas	31052	0	0	0	12	0	0	23	0		
	New Washington	42113	0	1	2	2	0	0	44	0		
	Numancia	29862	0	0	0	0	0	0	13	0		
	Tangalan	20277	0	0	0	0	12	0	46	0		
	not specified	n/a	0	0	0	0	0	0	0	1	0	9

Filter by cluster:

Filter by emergencies:

Filter by source:

Filter by participating organization(s):

Filter by location:

- VI (Western Visayas) (20)
- CAPIZ (24)
- Roxas City (7)
- PANAY (3)
- QUARTERO (2)
- MAAYON (2)
- ILOILO (23)
- ESTANCIA (8)
- San Dionisio (7)
- BATAK (5)
- CARLES (6)
- Sara (5)
- CONCEPCION (4)
- ILOILO CITY (CAPITAL) (4)
- BALASAN (2)
- BAROTAC VIEJO (2)

Assessment Registry

List Table Map



A	B	F	G	H	I
Organisation	Sector/ Cluster	Province	Province CODE	Municipality	Municipality CODE
Citizens' Disaster Response Center	Emergency Shelter	CAPIZ	061900000	ROXAS CITY (CAPITAL)	061914000
Citizens' Disaster Response Center	Emergency Shelter	CAPIZ	061900000	ROXAS CITY (CAPITAL)	061914000
Citizens' Disaster Response Center	Emergency Shelter	OCCIDENTAL MINDORO	175100000	SAN JOSE	175110000
Citizens' Disaster Response Center	Emergency Shelter	OCCIDENTAL MINDORO	175100000	MAGSAYSAY	175105000
Citizens' Disaster Response Center	Emergency Shelter	OCCIDENTAL MINDORO	175100000	SAN JOSE	175110000
Citizens' Disaster Response Center	Emergency Shelter	OCCIDENTAL MINDORO	175100000	MAGSAYSAY	175105000
Citizens' Disaster Response Center	Emergency Shelter	OCCIDENTAL MINDORO	175100000	RIZAL	175108000
Citizens' Disaster Response Center	Emergency Shelter	OCCIDENTAL MINDORO	175100000	RIZAL	175108000
LDS Charities	WASH	OCCIDENTAL MINDORO	175100000		
PRC	Food and Agriculture	OCCIDENTAL MINDORO	175100000	PALUAN	175107000
PRC	Food and Agriculture	OCCIDENTAL MINDORO	175100000	PALUAN	175107000
Citizens' Disaster Response Center	Emergency Shelter	OCCIDENTAL MINDORO	175200000	BULALACAO (SAN PEDRO)	175204000
Citizens' Disaster Response Center	Emergency Shelter	OCCIDENTAL MINDORO	175200000	MANSALAY	175207000
Citizens' Disaster Response Center	Emergency Shelter	OCCIDENTAL MINDORO	175200000	BONGABONG	175203000
Citizens' Disaster Response Center	Emergency Shelter	OCCIDENTAL MINDORO	175200000	SOCORRO	175214000
Citizens' Disaster Response Center	Emergency Shelter	OCCIDENTAL MINDORO	175200000	SOCORRO	175214000
Citizens' Disaster Response Center	Emergency Shelter	OCCIDENTAL MINDORO	175200000		
Citizens' Disaster Response Center	Emergency Shelter	OCCIDENTAL MINDORO	175200000		
Citizens' Disaster Response Center	Emergency Shelter	OCCIDENTAL MINDORO	175200000		
Citizens' Disaster Response Center	Emergency Shelter	OCCIDENTAL MINDORO	175200000		
Citizens' Disaster Response Center	Emergency Shelter	OCCIDENTAL MINDORO	175200000		
Citizens' Disaster Response Center	Emergency Shelter	OCCIDENTAL MINDORO	175200000		
Citizens' Disaster Response Center	Emergency Shelter	OCCIDENTAL MINDORO	175200000	BACO	175201000

OPS On-line Planning / Projects System

For organizations in a major crisis to coordinate their implementation responsibilities and peer-review their funding requests.

Advantages

- Preparedness activity
 - Common operational baseline datasets
 - P-codes for harmonization
 - Known location for operational datasets
 - Generation of network (global, regional, country)
 - Identification missing datasets/require improvements
-

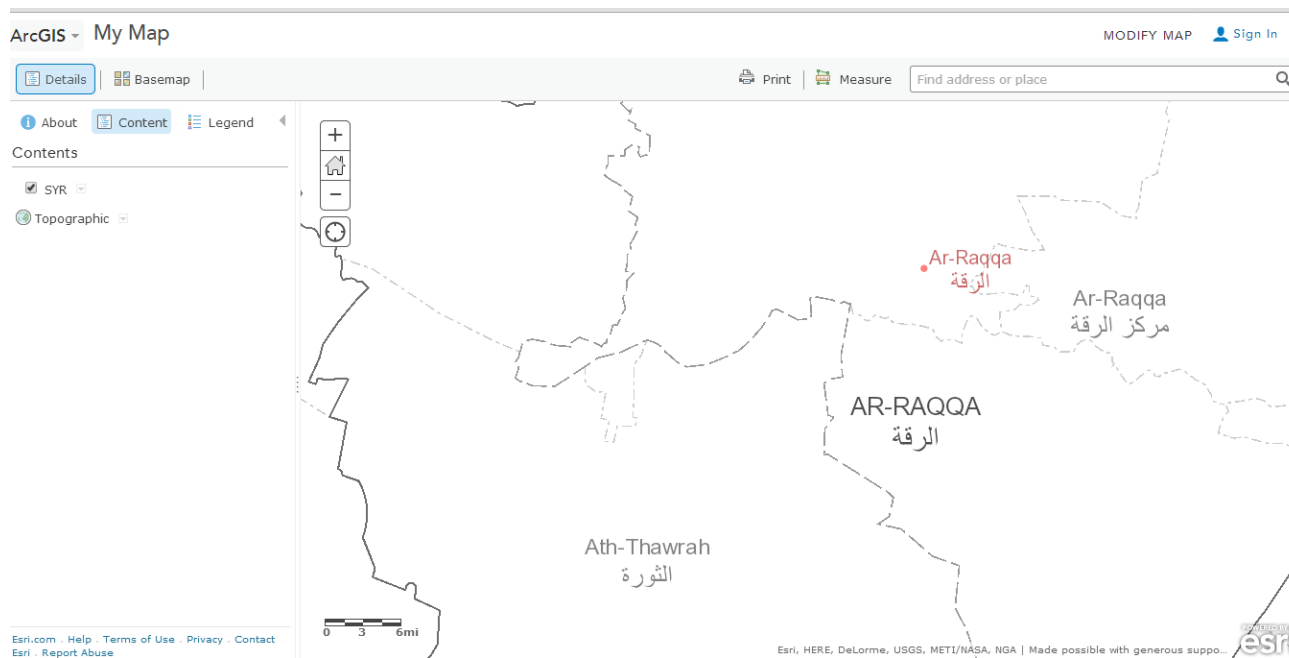
Challenges

- Data quality
 - Openness of data
 - Lack of data
 - Boundary alignment of datasets
 - Feedback loop for externally processed datasets
-

Future

- Registry platform upgrade
 - Guidance / standard with global IM Working Group
 - Continued improvements to datasets (Country and Regional offices working with data sources)
 - COD Services with ITOS and field offices
-

COD Services from Information Technology Outreach Services (ITOS)



Formats that will be available
ESRI Map, WMS, KML
Services, WKT, Geodatabases,
Shapefiles

Focus on Administrative
boundaries and populated
places

Participate! (data@humanitarianresponse.info)

Support data sharing

- Let us know about datasets (global, regional, country)
- If you clean/process a dataset share it back into the system
- Let us know how you used CODs and FODs
- Use the COD Services to absorb CODs into your system

Provide feedback

- Let us know your thoughts on datasets, metadata, and the registry

Support standards

- Adopt the P-codes to improve data standardization and harmonization
-